

Thursday, January 31, 2019

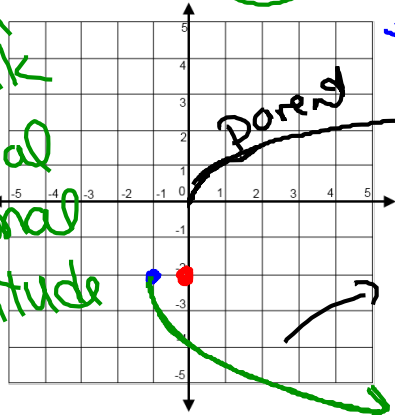
- Warm-up

Function: "vertical line test"

- What are the domain and range for the following?

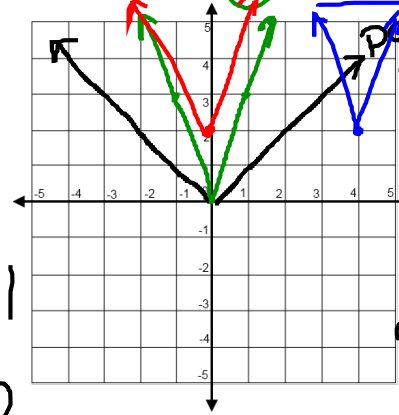
(hint: graph them first)

$$f(x) = -2\sqrt{x+1} - 2$$



Domain: $x \geq -1$
 x's
 Range: $y \leq -2$
 y's

$$g(x) = 3|x-4| + 2$$



Domain: $-\infty < x < \infty$
 all Real numbers
 Range: $y \geq 2$

- Review for Test

Objectives

- Content:** I will review material from this unit in preparation for the unit test.
- Social:** I will use my time wisely and ask questions if I do not understand.
- Language:** I will read questions clearly and answer them fully.

Review