

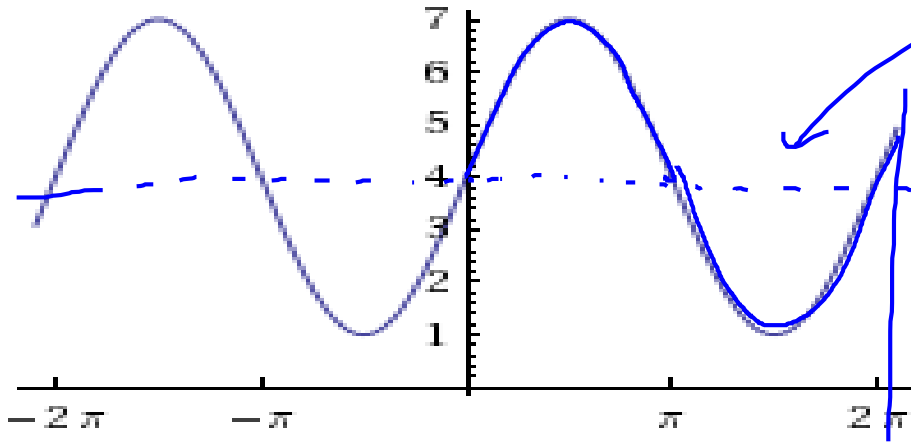
Wednesday, April 3, 2019

$$y = 4 + 3 \sin x$$

$$y = 3 \sin 1x + 4$$

- Warm-up

- Name the function, vertical shift, amplitude and frequency of the given graph:



function = \sin

vertical shift = $+4$

amplitude = 3

frequency = $\frac{1}{2\pi}$
how many cycles in 2π

- Practice trig functions by hand
- Match Mine

Objectives

Content: I will understand the shape and critical features of **sine** and **cosine waves**.

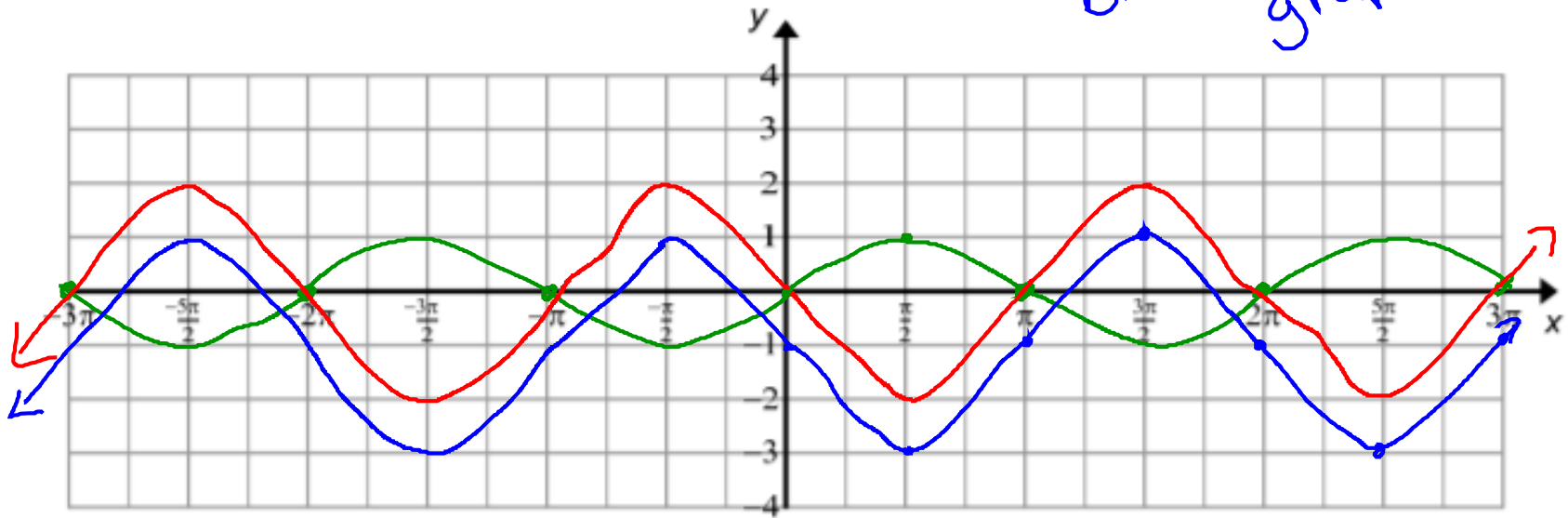
Social: I will listen well and discuss my uncertainties with my group members.

Language: I will clearly compare and contrast the critical features of **sine** and **cosine waves** as well as apply **amplitude, vertical & horizontal shift, frequency & period**.

Sketching Graphs

• $y = -2\sin x - 1$

blue = final graph



Objectives

Content: I will understand the shape and critical features of **sine** and **cosine waves**.

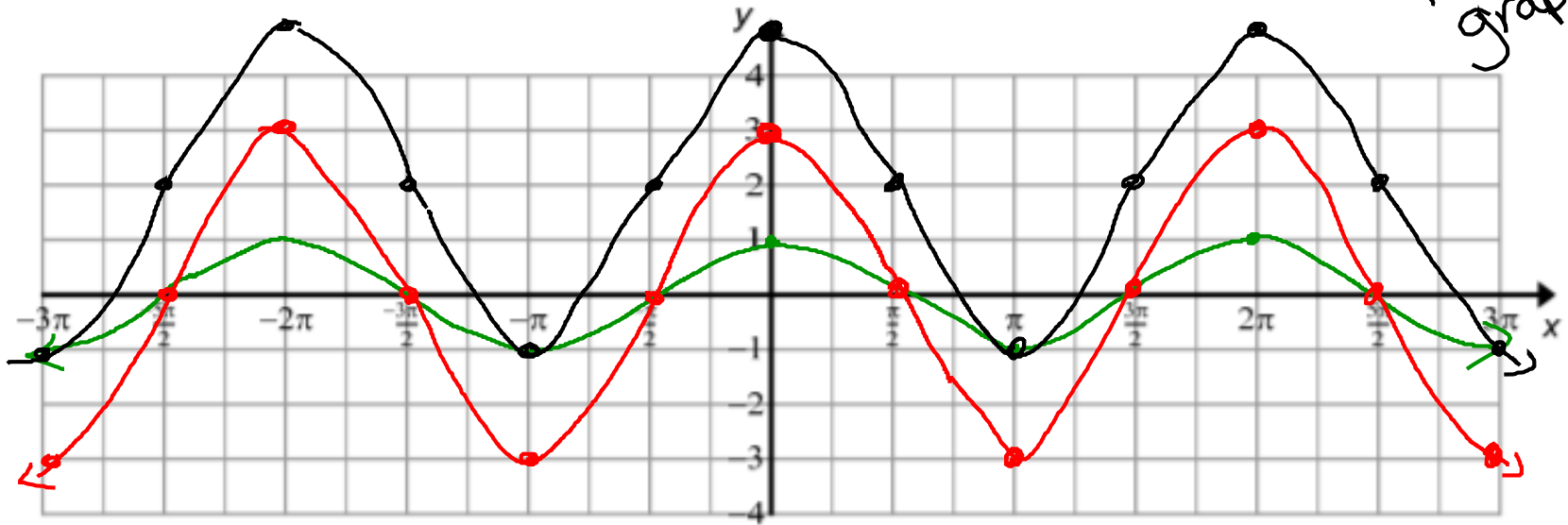
Social: I will listen well and discuss my uncertainties with my group members.

Language: I will clearly compare and contrast the critical features of **sine** and **cosine waves** as well as apply **amplitude, vertical & horizontal shift, frequency & period**.

Sketching Graphs

• $y = 3\underline{\cos x} + \underline{2}$

black =
final
graph



Objectives

Content: I will understand the shape and critical features of **sine** and **cosine waves**.

Social: I will listen well and discuss my uncertainties with my group members.

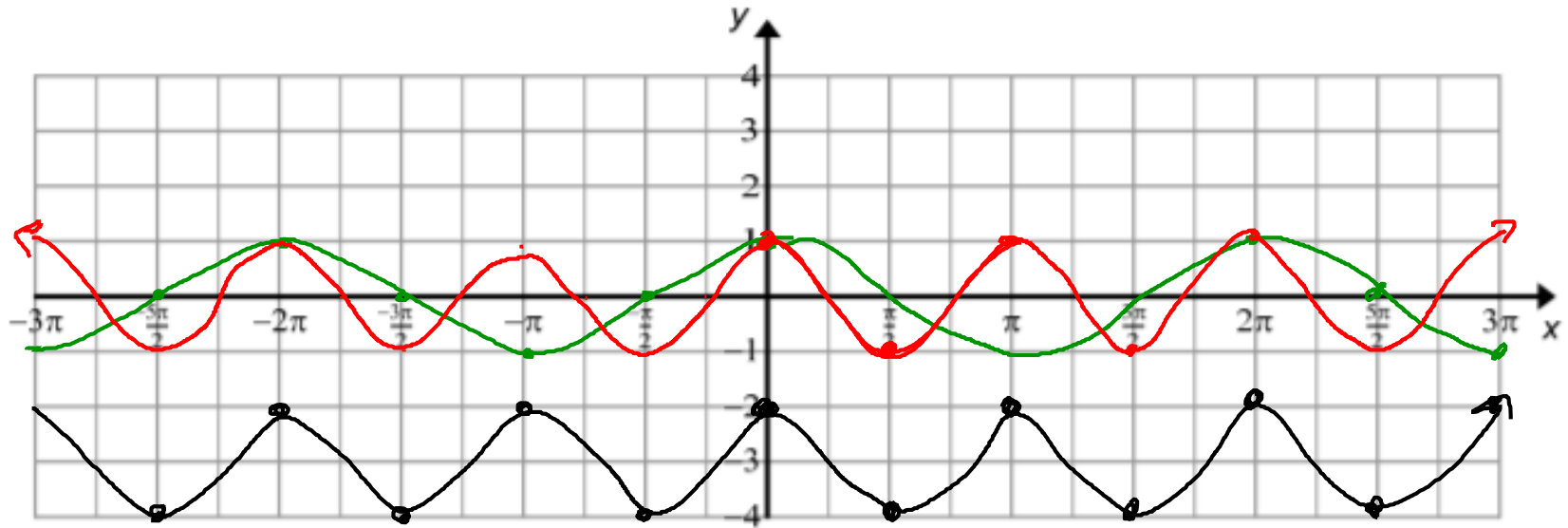
Language: I will clearly compare and contrast the critical features of **sine** and **cosine waves** as well as apply **amplitude, vertical & horizontal shift, frequency & period**.

Sketching Graphs

frequency $\frac{2}{2\pi}$

period = π

• $y = \underline{\cos 2x} - \underline{3}$



Objectives

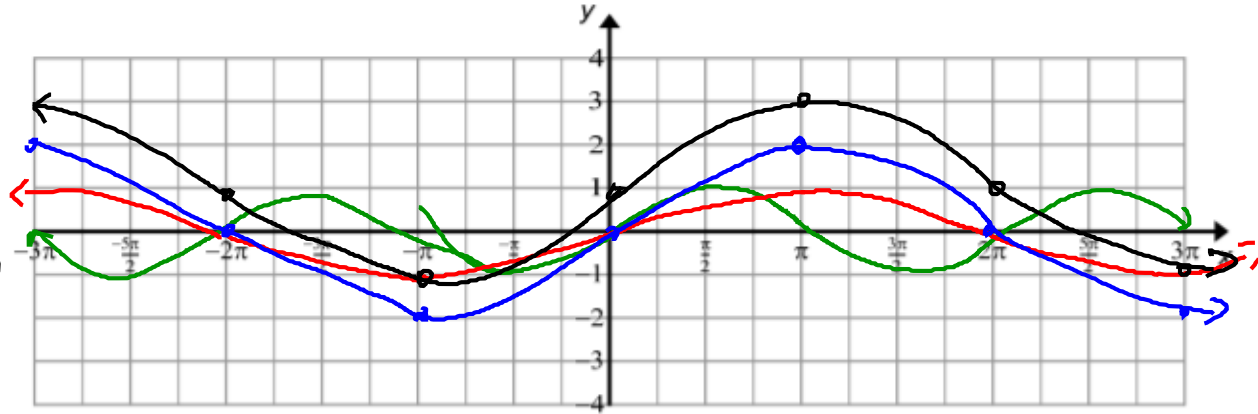
Content: I will understand the shape and critical features of **sine** and **cosine waves**.

Social: I will listen well and discuss my uncertainties with my group members.

Language: I will clearly compare and contrast the critical features of **sine** and **cosine waves** as well as apply **amplitude, vertical & horizontal shift, frequency & period**.

Sketching Graphs

- *function: sine*
- *amplitude: 2*
- *vertical shift: 1*
- *frequency: 1/2*



$$1/2 \quad y = 2 \sin \frac{1}{2}x + 1$$

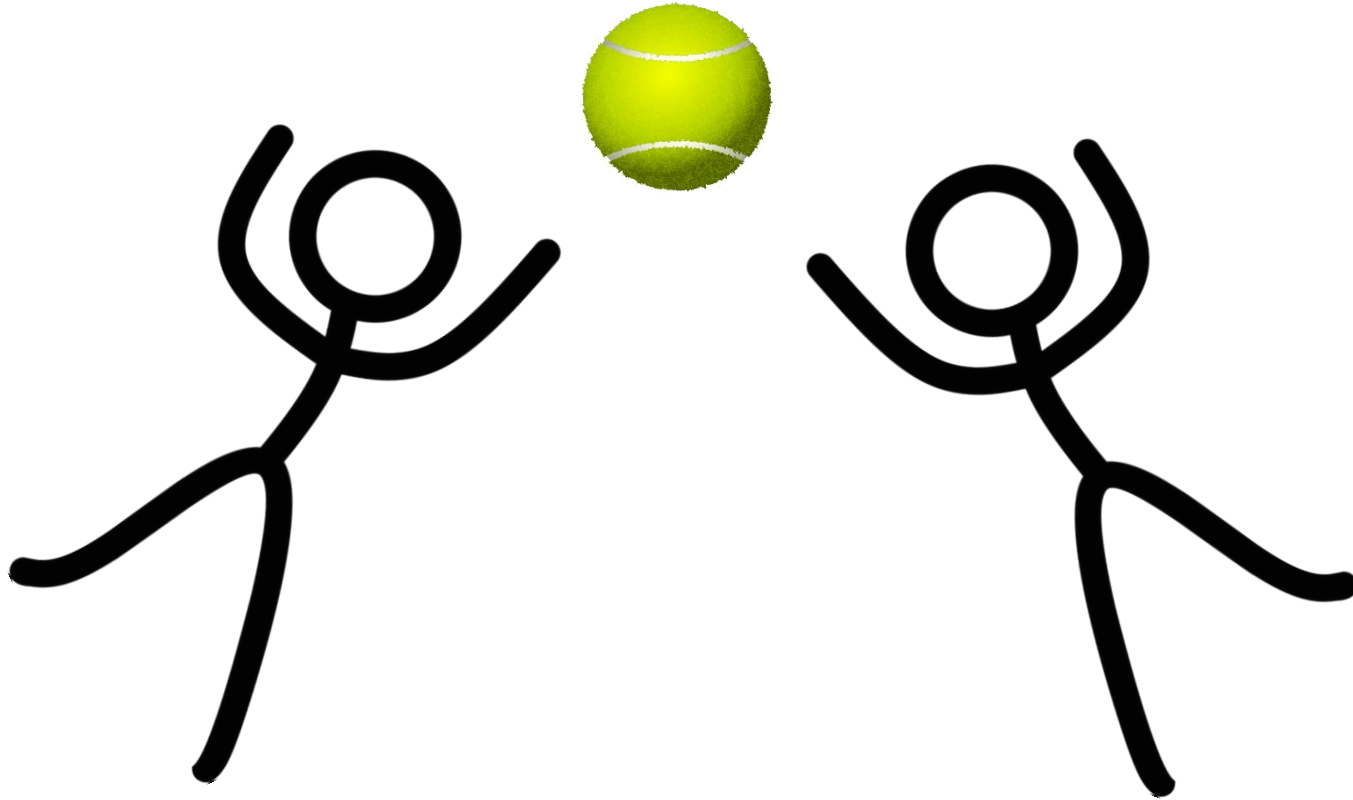
Objectives

Content: I will understand the shape and critical features of **sine** and **cosine waves**.

Social: I will listen well and discuss my uncertainties with my group members.

Language: I will clearly compare and contrast the critical features of **sine** and **cosine waves** as well as apply **amplitude, vertical & horizontal shift, frequency & period**.

Brain Break



Objectives

Content: I will understand the shape and critical features of **sine** and **cosine waves**.

Social: I will listen well and discuss my uncertainties with my group members.

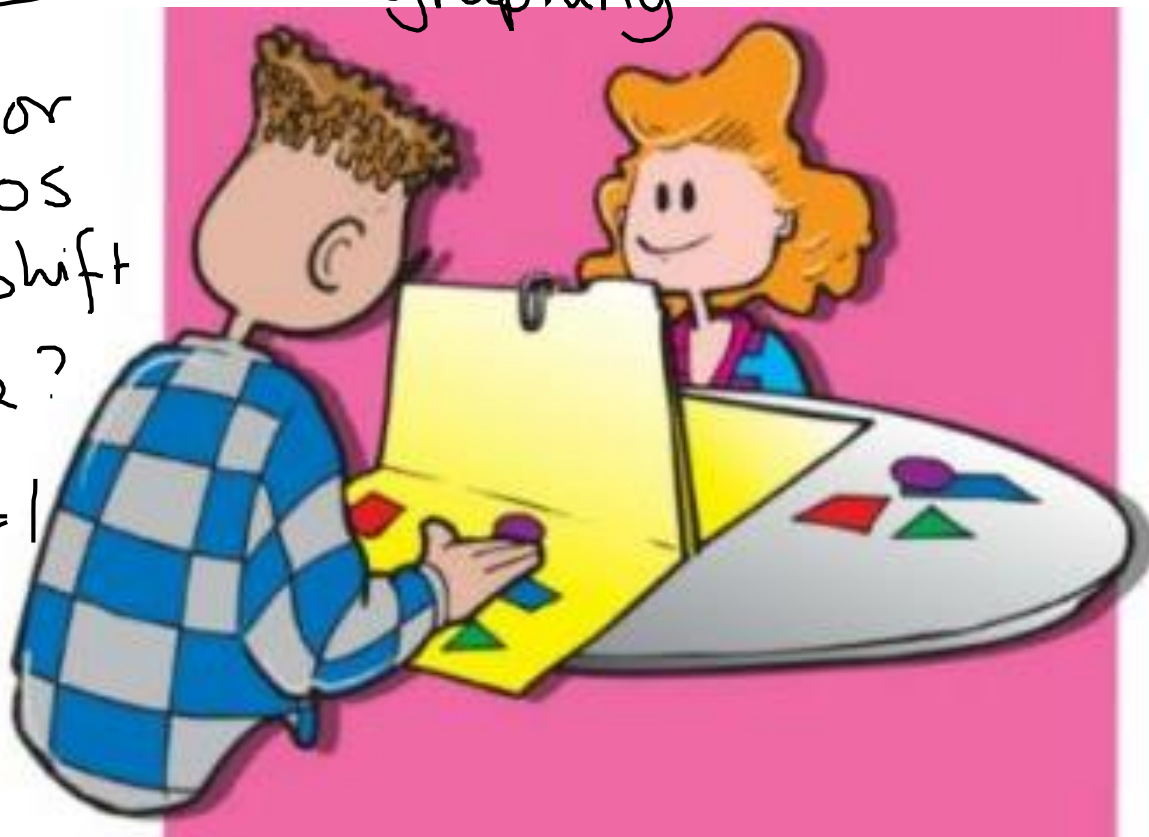
Language: I will clearly compare and contrast the critical features of **sine** and **cosine waves** as well as apply **amplitude, vertical & horizontal shift, frequency & period**.

#1

Match Mine

write an equation
graphing

Sin or
cos
vertical shift
amplitude?
frequency = 1



Objectives

Content: I will understand the shape and critical features of **sine** and **cosine waves**.

Social: I will listen well and discuss my uncertainties with my group members.

Language: I will clearly compare and contrast the critical features of **sine** and **cosine waves** as well as apply **amplitude, vertical & horizontal shift, frequency & period**.